

INDICATOR™ Markers



Actual image enlarged



Catalog Number: TM4001

- INDICATOR™ Crosses

Description

- Flat, disposable marker
- Clear, adhesive backing
- 0.38" length

Quantity

- 130 markers per box



Catalog Number: TM4003

- INDICATOR™ Dots

Description

- Flat, disposable marker
- Clear, adhesive backing
- 0.125" diameter

Quantity

- 150 markers per box



Catalog Number: TM4007

- INDICATOR™ Lines

Description

- Flat, disposable marker
- Clear, adhesive backing
- Cut to your desired length
- 0.13" width

Quantity

- 144" per box



Catalog Number: TM4004

- INDICATOR™ CT Biopsy Strip

Description

- Flat, disposable marker
- Clear, adhesive backing
- Cut to your desired length
- Pattern: Line-hole-dot-hole
- Holes allow needle passage
- Perfect for small areas

Quantity

- 36" per box



Catalog Number: TM4010

- INDICATOR™ CT Biopsy Grid

Description

- Flat, disposable marker
- Clear, adhesive backing
- Entire Grid: 3" x 4"
- Pattern: 7 lines, 6 windows
- Windows allow needle passage
- Perfect for broad areas

Quantity

- 15 grids per box

IZI Medical Products
7020 Tudsbury Road
Baltimore, MD 21244
USA
Tel: 800 231 1499
Tel: 1 410 594 9403
Fax: 1 410 594 0540
Web: www.izi-med.com

**Indicator™
Markers**



INDICATOR™ Markers for Radiology and Radiation Therapy

INDICATOR™ Markers in Radiology

- Use in Diagnostic Radiology, Angiography, Mammography, CT, and Fluoroscopy
- Use to identify masses, scar tissue, moles, birth marks, or any point of interest
- Provides a clear and accurate reference point with no spray artifacts
- Flat marker will not indent tissue
- Disposable
- Clear, adhesive backing allows you to see the exact placement of the marker

INDICATOR™ Markers in Radiation Therapy

- Use in RT Simulation and Treatment Planning
- Use to identify masses, scar tissue, moles, birth marks, or any point of interest
- Use to outline portal fields
- Provides a clear and accurate reference point with no spray artifacts
- Flat marker will not indent tissue
- Disposable
- Clear, adhesive backing allows you to see the exact placement of the marker

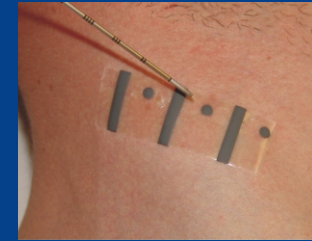


Quality. Versatility. Innovation.

INDICATOR™ Markers Aid Biopsies

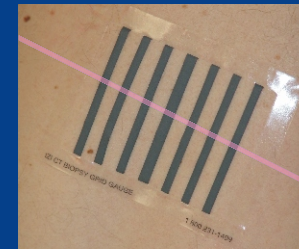
TM4004 INDICATOR™ CT Biopsy Strip

CT Biopsy Strips have a patterned series of lines, dots, and needle access holes. The easy-to-read pattern helps to identify the accurate needle angle and entry site.



TM4010 INDICATOR™ CT Biopsy Grid

CT Biopsy Grids are larger than the strips and are designed for broader areas like the abdomen. They have a series of 7 lines, creating 6 access windows. The center line is slightly thicker to aid in orientation.



Uses

- Aid in CT-guided biopsies or pain injections
- CT Biopsy Strip is used for small areas
- CT Biopsy Grid is used for broad areas

Benefits

- Pattern helps to identify needle angle and entry site
- 2 sizes to choose from
- Adhesive backing allows for contouring to body shape

www.izimed.com